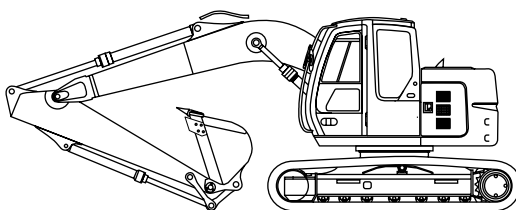


HITACHI ZAXIS135US

engine rated power
65 kW / 88 HP

operating weight
13 200 - 14 200 kg

bucket capacity
SAE, PCSA heaped : 0.19 - 0.66 m³
CECE heaped : 0.17 - 0.55 m³



HITACHI

Weights and ground pressure

ZAXIS135US (WITHOUT BLADE):

Equipped with 4.60 m boom, 2.52 m arm and 0.50 m³ (SAE, PCSA heaped) bucket.

Shoe type	Shoe width	Operating weight	Ground pressure
Triple grouser	500 mm	13 200 kg	41 kPa (0.42 kgf/cm ²)
Triple grouser	600 mm	13 500 kg	35 kPa (0.36 kgf/cm ²)
Triple grouser	700 mm	13 700 kg	30 kPa (0.31 kgf/cm ²)
Triple grouser	800 mm	14 100 kg	27 kPa (0.28 kgf/cm ²)
Pad	500 mm	13 300 kg	41 kPa (0.42 kgf/cm ²)
Flat	510 mm	13 700 kg	42 kPa (0.43 kgf/cm ²)

Weights of the basic machines [including 3 650 kg counterweight and triple grouser shoes, excluding front-end attachment, fuel, hydraulic oil, engine oil and coolant etc.] are:

ZAXIS135US 10 600 kg with 500 mm shoes

ZAXIS135US (WITH BLADE):

Equipped with 4.60 m boom, 2.52 m arm and 0.50 m³ (SAE, PCSA heaped) bucket.

Shoe type	Shoe width	Operating weight	Ground pressure
Triple grouser	500 mm	14 200 kg	44 kPa (0.45 kgf/cm ²)

Backhoe attachments

Boom and arms are of welded, box-section design. 4.60 m monoblock boom, and 2.10 m, 2.52 m and 3.01 m arms are available. Bucket is of welded steel structure.

BUCKETS

Capacity		Width		No. of teeth	Weight	Recommendation ZAXIS135US		
SAE (PCSA) heaped	CECE heaped	Without side cutters	With side cutters			2.10 m arm	2.52 m arm	3.01 m arm
0.19 m ³	0.17 m ³	450 mm	550 mm	3	260 kg	⊙	⊙	⊙
0.30 m ³	0.25 m ³	580 mm	700 mm	3	290 kg	⊙	⊙	⊙
0.40 m ³	0.33 m ³	680 mm	800 mm	4	340 kg	⊙	⊙	⊙
0.45 m ³	0.40 m ³	850 mm	970 mm	5	400 kg	⊙	⊙	⊙
0.50 m ³	0.45 m ³	890 mm	1 010 mm	5	410 kg	⊙	⊙	⊙*
0.59 m ³	0.50 m ³	950 mm	1 070 mm	5	430 kg	⊙	○	—
0.66 m ³	0.55 m ³	1 030 mm	—	5	430 kg	□	—	—
1 0.50 m ³	0.45 m ³	890 mm	1 010 mm	5	470 kg	⊙	⊙	⊙
3 0.50 m ³	0.45 m ³	890 mm	1 010 mm	5	500 kg	⊙	⊙	⊙
*2 0.59 m ³	0.50 m ³	950 mm	1 070 mm	5	490 kg	⊙	○	—
V-type bucket: 0.35 m ³ (CECE heaped)				3	370 kg	○	○	○
One-point ripper				1	320 kg	●	●	—
Slope-finishing blade: Width 1 000 mm, length 1 600 mm					430 kg	◇	◇	◇

- ⊙ Suitable for materials with density of 1 800 kg/m³ or less
- Suitable for materials with density of 1 600 kg/m³ or less
- Suitable for materials with density of 1 100 kg/m³ or less
- Heavy-duty service
- ◇ Slope-finishing service
- Not applicable

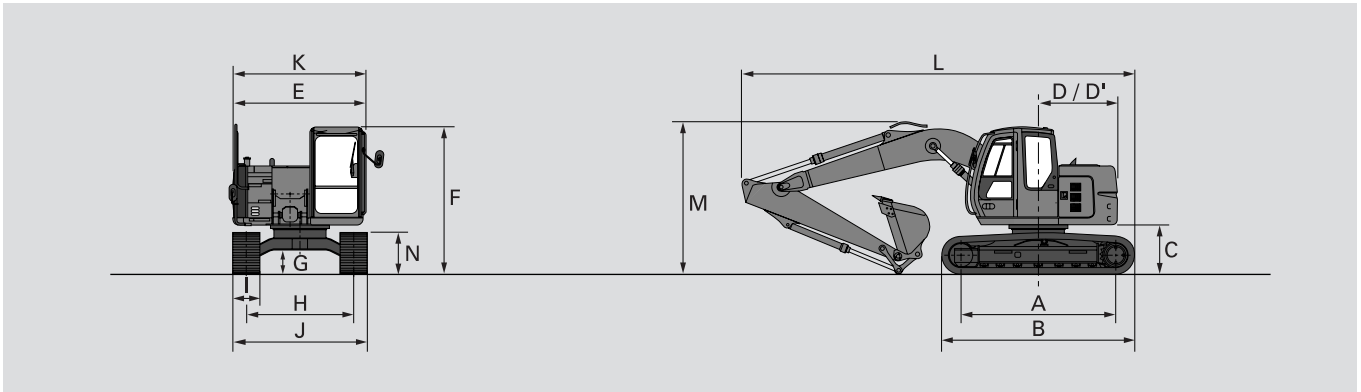
- * With 700 mm shoes only
- *1 K-reinforced bucket
- *2 Reinforced bucket
- *3 Level-pin-type reinforced bucket

Service refill capacities

Fuel tank	200.0 l
Engine coolant	19.0 l
Engine oil	15.8 l
Swing mechanism	3.2 l
Travel final device	4.2 l
(each side)	
Hydraulic system	120.0 l
Hydraulic tank	62.0 l

SPECIFICATIONS

Dimensions



Unit: mm

ZAXIS135US						
A Sprocket centre to idler centre	2 880					
B Undercarriage length	3 580					
*C Counterweight clearance	890					
D Rear-end swing radius	1 465					
D' Rear-end length	1 465					
E Overall width of upper structure	2 470					
F Overall height of cabin	2 740					
*G Min. ground clearance	440					
H Track gauge	1 990					
I Track shoe width	G 500	G 600	G 700	G 800	P 500	F 510
J Undercarriage width	2 490	2 590	2 690	2 790	2 490	2 500
K Overall width	2 490	2 590	2 690	2 790	2 490	2 500
L Overall length						
With 2.10 m arm	7 290			7 340		
With 2.52 m arm	7 290			7 340		
With 3.01 m arm	7 310			7 360		
M Overall height of boom						
With 2.10 m arm	2 840			2 830		
With 2.52 m arm	2 840			2 830		
With 3.01 m arm	2 840			2 830		
N Track height with triple grouser shoes	800			865		

* Excluding track shoe lug.

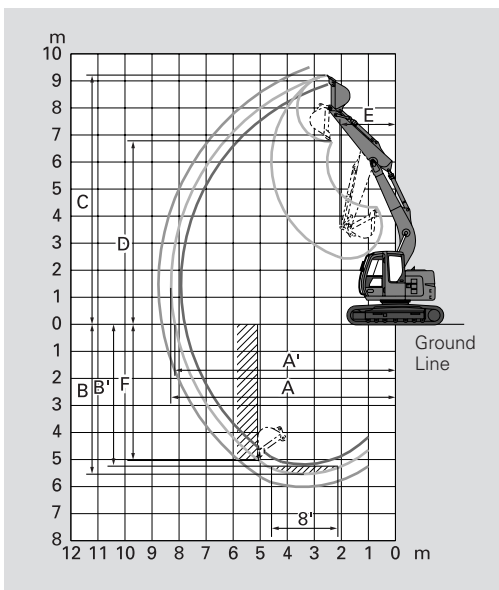
G: Triple grouser shoe

P: Pad crawler

F: Flat shoe

Working ranges

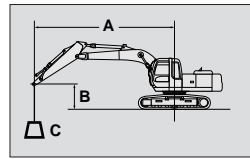
Unit: mm



ZAXIS135US			
Arm length	2.10 m	2.52 m	3.01 m
A Max. digging reach	7 930	8 300	8 760
A' Max. digging reach (on ground)	7 790	8 160	8 640
B Max. digging depth	5 120	5 530	6 020
B' Max. digging depth (B' level)	4 880	5 320	5 840
C Max. cutting height	8 950	9 220	9 610
D Max. dumping height	6 490	6 760	7 150
E Min. swing radius	1 940	2 060	2 400
F Max. vertical wall	4 620	4 970	5 460
Bucket digging force ** ISO	99 kN (7 500 kgf)	99 kN (7 500 kgf)	99 kN (7 500 kgf)
Bucket digging force ** SAE : PCSA	86 kN (8 800 kgf)	86 kN (8 800 kgf)	86 kN (8 800 kgf)
Arm crowd force ** ISO	73 kN (7 500 kgf)	65 kN (6 600 kgf)	58 kN (5 900 kgf)
Arm crowd force ** SAE : PCSA	71 kN (7 200 kgf)	63 kN (6 400 kgf)	57 kN (5 800 kgf)

LIFTING CAPACITIES

Metric measure



A: Load radius
B: Load point height
C: Lifting capacity

ZAXIS135US



Rating over-side or 360 degrees



Rating over-front

Unit: kg

Conditions	Load point height	Load radius												At max. reach				
		2 m		3 m		4 m		5 m		6 m		7 m		meter				
Boom 4.60 m	6 m			*3 920	*3 920	*3 890	*3 890									*3 060	2 950	4.88
Arm 2.10 m	4 m	*6 110	*6 110	*5 200	*5 200	*4 440	3 970	*4 010	2 800	3 080	2 090					*2 760	1 970	6.19
Shoe 500 mm	2 m					5 570	3 590	3 940	2 610	2 990	2 000					2 530	1 700	6.68
	0 m			*5 690	5 120	5 290	3 340	3 760	2 450	2 890	1 910					2 570	1 700	6.53
	-1 m	*4 280	*4 280	*8 370	5 120	5 250	3 300	3 730	2 420	2 880	1 900					2 750	1 820	6.21
	-3 m	*7 840	*7 840	*6 240	5 260	*4 910	3 380									*3 620	2 550	4.93
Boom 4.60 m	6 m					*3 410	*3 410	*3 360	2 890							*2 500	*2 500	5.37
Arm 2.52 m	4 m			*4 420	*4 420	*4 010	*4 010	*3 700	2 830	3 110	2 110					*2 300	1 790	6.58
Shoe 500 mm	2 m			*7 660	5 580	*5 540	3 630	3 950	2 620	2 990	1 990	2 350	1 570			2 330	1 550	7.04
	0 m			*6 560	5 080	*5 270	3 320	3 740	2 430	2 870	1 890					2 350	1 550	6.90
	-1 m	*4 420	*4 420	*8 380	5 050	5 210	3 260	3 700	2 390	2 840	1 860					2 490	1 640	6.60
	-3 m	*9 130	*9 130	*6 890	5 150	5 250	3 300	3 730	2 420							3 340	2 190	5.41
Boom 4.60 m	6 m					*2 870	*2 870	*3 040	2 960							*2 140	*2 140	5.97
Arm 3.01 m	4 m					*3 490	*3 490	*3 330	2 870	3 140	2 130	*2 260	1 630			*1 990	1 590	7.08
Shoe 500 mm	2 m			*6 810	5 760	*5 080	3 700	3 980	2 640	3 000	2 000	2 360	1 570			*2 050	1 390	7.51
	0 m			*7 170	5 090	*5 280	3 320	3 740	2 420	2 860	1 870	2 880	1 500			*2 110	1 380	7.38
	-1 m	*4 150	*4 150	*8 050	4 990	5 180	3 230	3 670	2 360	2 810	1 830	2 260	1 480			2 220	1 450	7.10
	-3 m	*8 480	*8 480	*7 510	5 030	5 170	3 220	3 660	2 350	2 830	1 850					2 820	1 840	6.02

ZX135US BLADE (DOWN)

Unit: kg

Conditions	Load point height	Load radius												At max. reach				
		2 m		3 m		4 m		5 m		6 m		7 m		meter				
Boom 4.60 m	6 m			*3 920	*3 920	*3 890	*3 890									*3 060	*3 060	4.88
Arm 2.10 m	4 m	*6 110	*6 110	*5 200	*5 200	*4 440	4 340	*4 010	3 070	*3 740	2 310					*2 760	2 180	6.19
Shoe 500 mm	2 m					*6 760	*6 760	*6 760	6 760	4 090	2 220					*6 760	1 890	6.68
	0 m			*5 690	5 670	*6 760	6 760	*6 760	6 760	4 270	2 130					*6 760	1 900	6.53
	-1 m	*4 280	*4 280	*8 370	5 670	*6 760	6 760	*6 760	6 760	4 270	2 130					*6 760	6 761	6.21
	-3 m	*7 840	*7 840	*6 240	6 760	*6 760	6 760									*6 760	2 830	4.93
Boom 4.60 m	6 m					*3 410	*3 410	*3 360	3 170							*2 500	*2 500	5.37
Arm 2.52 m	4 m			*4 420	*4 420	*4 010	*4 010	*3 700	3 100	*3 520	2 320					*2 300	1 990	6.58
Shoe 500 mm	2 m			*7 660	*6 130	*5 540	3 990	*4 510	2 890	*3 920	2 210	*2 630	1 750			*2 380	1 730	7.04
	0 m			*6 560	*5 640	*6 520	3 680	*5 110	2 700	*4 220	2 100					*2 730	1 730	6.90
	-1 m	*4 420	*4 420	*8 380	*5 600	*6 500	3 630	*5 120	2 660	*4 160	2 080					*3 070	1 830	6.60
	-3 m	*9 130	*9 130	*6 890	5 700	*5 360	3 670	*4 130	2 690							*3 570	2 430	5.41
Boom 4.60 m	6 m					*2 870	*2 870	*3 040	*3 040							*2 140	*2 140	5.97
Arm 3.01 m	4 m					*3 490	*3 490	*3 330	3 150	*3 220	2 350	*2 260	1 810			*1 990	1 770	7.08
Shoe 500 mm	2 m			*6 810	6 320	*5 080	4 060	*4 210	2 920	*3 700	2 220	*3 360	1 750			*2 050	1 560	7.51
	0 m			*7 170	5 640	*6 340	3 690	*4 970	2 690	*4 130	2 090	*3 540	1 680			*2 310	1 550	7.38
	-1 m	*4 150	*4 150	*8 050	5 540	*6 490	3 600	*5 100	2 630	*4 180	2 050	*3 160	1 660			*2 560	1 630	7.10
	-3 m	*8 480	*8 480	*7 510	5 590	*5 750	3 590	*4 520	2 620	*3 410	2 070					*3 380	2 060	6.02

- Notes:
1. Ratings are based on ISO 10567.
 2. Lifting capacity of the ZAXIS series does not exceed 75% of tipping load with the machine on firm, level ground or 87% full hydraulic capacity.
 3. The load point is the center-line of the bucket pivot mounting pin on the arm.
 4. *Indicates load limited by hydraulic capacity.
 5. 0 m = Ground.

Standard Equipment

Standard equipment may vary by country, so please consult your Hitachi dealer for details.

ENGINE

- H/P mode control
- E mode control
- 50 A alternator
- Dry-type air filter with evacuator valve (with safety element)
- Cartridge-type engine oil filter
- Cartridge-type fuel filter
- Radiator and oil cooler with dust protective net
- Radiator reserve tank
- Fan guard
- Isolation-mounted engine
- Auto-idle system
- Auto acceleration system

HYDRAULIC SYSTEM

- Work mode selector
- Engine speed sensing system
- E-P control system
- Quick warm-up system for pilot circuit
- Shockless valve in pilot circuit
- Boom-arm anti-drift valve
- Control valve with main relief valve
- Extra port for control valve
- Suction filter
- Full-flow filter
- Pilot filter

CABIN

- CRES (Corner Reinforced Structure) cabin
- OPG top guard fitted
- Level I (ISO) compliant cabin
- All-weather sound-suppressed steel cabin
- Reinforced, tinted glass windows
- 4 fluid-filled elastic mounts
- Openable front windows-upper, and lower and left side windows
- Intermittent windshield wipers
- Front window washer
- Footrest
- Electric double horn
- AM - FM radio with digital clock
- Auto-idle / acceleration selector
- Seat belt
- Drink holder
- Cigar lighter
- Ashtray
- Storage box
- Glove compartment
- Fire extinguisher bracket
- Floor mat
- Pilot control shut-off lever
- Engine stop knob
- Auto control air conditioner
- Transparency roof with roll curtain
- Suspension seat

MONITOR SYSTEM

- Meters: Hourmeter and trip-meter, engine coolant temperature gauge and fuel gauge
- Warning lamps: Alternator charge, engine oil pressure, engine overheat, air filter restriction and minimum fuel level
- Pilot lamps: Engine preheat, work light, auto-idle, autoacceleration, digging mode and attachment mode
- Alarm buzzers: Engine oil pressure and engine overheat

LIGHTS

- 2 working lights

UPPER STRUCTURE

- Undercover
- 2 650 kg counterweight
- Fuel level float
- Hydraulic oil level gauge
- Tool box
- Rearview mirror (right & left side)
- Swing parking brake

UNDERCARRIAGE

- Travel parking brake
- Travel motor covers
- Hydraulic track adjuster
- Bolt-on sprocket
- Upper rollers and lower rollers
- Reinforced track links with pin seals

FRONT ATTACHMENTS

- HN bushing
- WC thermal spraying
- Reinforced resin thrust plate
- Flanged pin
- Monolithically cast bucket link A
- Centralized lubrication system
- Dirt seal on all bucket pins

MISCELLANEOUS

- Standard tool kit
- Lockable machine covers
- Lockable fuel filling cap
- Skid-resistant tapes, plates and handrails
- Travel direction mark on track frame
- Onboard ICX

Optional Equipment

Optional equipment may vary by country, so please consult your Hitachi dealer for details.

CABIN

- Front glass lower guard
- Front glass upper guard
- Overhead guard
- Level II (ISO) compliant OPG top and front guards
- Anti-vandal cover
- Suspension seat with heater
- Air suspension seat with heater
- Rain guard
- Sun visor
- Additional fuse box
- Immobilizer key
- 12 V power source

LIGHTS

- Additional cabin roof front lights
- Additional cabin roof rear lights
- Rotating lamp
- Additional boom light with cover

UNDERCARRIAGE

- Reinforced track guard (1 unit each side)
- Track undercover

ATTACHMENT

- Hammer and crusher piping
- Parts for hammer
- Parts for hammer and crusher
- Parts for 2 speed selector
- Assist piping
- Additional pump (30 l/min)
- Reinforced link B
- Reinforced arm
- Clamshell piping

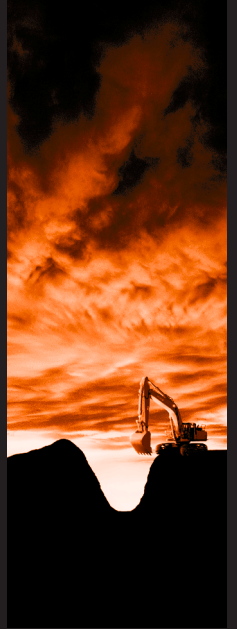
OTHERS

- Hose rupture valves
- Overload warning device
- Electric fuel refilling pump
- Fuel double filters
- High-performance full-flow filter (with restriction indicator)
- Biodegradable oil

Hitachi Construction Machinery (Europe) NV

Souvereinstraat 16, 4903 RH Oosterhout, P.O. Box 404, 4900 AK Oosterhout, The Netherlands
T +31-(0)162 48 44 00, F +31-(0)162 45 74 53, www.hcme.com

Siciliëweg 5, Haven 5112, 1045 AT Amsterdam, P.O. Box 59239, 1040 KE Amsterdam, The Netherlands
T +31-(0)20 44 76 700, F +31-(0)20 33 44 045, www.hcme.com



**Breaking
new
ground**

HITACHI