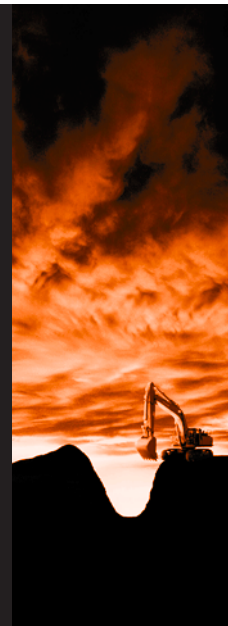
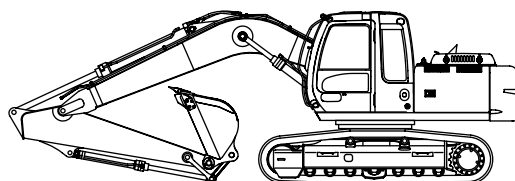


HITACHI ZAXIS180

engine rated power
90.2 kW / 123 HP

operating weight
17 600 - 19 300 kg

bucket capacity
PCSA heaped : 0.51 - 1.20 m³
CECE heaped : 0.45 - 1.00 m³



HITACHI

Weights and ground pressure

ZAXIS180LC / 180LCN WITH MONOBLOCK BOOM:

Equipped with 5.50 m monoblock boom, 2.70 m arm and 0.70 m³ (PCSA heaped) bucket.

ZAXIS180LC

Shoe type	Shoe width	Operating weight	Ground pressure
Triple grouser	600 mm	17 900 kg	40 kPa (0.41 kgf/cm ²)
Triple grouser	700 mm	18 100 kg	35 kPa (0.36 kgf/cm ²)
Triple grouser	800 mm	18 400 kg	31 kPa (0.32 kgf/cm ²)
Triple grouser	900 mm	18 700 kg	28 kPa (0.29 kgf/cm ²)
Flat	600 mm	18 600 kg	42 kPa (0.43 kgf/cm ²)

ZAXIS180LCN

Shoe type	Shoe width	Operating weight	Ground pressure
Triple grouser	500 mm	17 600 kg	47 kPa (0.48 kgf/cm ²)
Triple grouser	600 mm	17 800 kg	40 kPa (0.41 kgf/cm ²)
Triple grouser	700 mm	18 100 kg	35 kPa (0.36 kgf/cm ²)
Flat	600 mm	18 500 kg	41 kPa (0.42 kgf/cm ²)

ZAXIS180LC / 180LCN WITH 2-PIECE BOOM:

Equipped with 2-piece boom, 2.70 m arm and 0.70 m³ (PCSA heaped) bucket.

ZAXIS180LC

Shoe type	Shoe width	Operating weight	Ground pressure
Triple grouser	600 mm	18 500 kg	41 kPa (0.42 kgf/cm ²)
Triple grouser	700 mm	18 700 kg	36 kPa (0.37 kgf/cm ²)
Triple grouser	800 mm	19 000 kg	32 kPa (0.33 kgf/cm ²)
Triple grouser	900 mm	19 300 kg	29 kPa (0.30 kgf/cm ²)
Flat	600 mm	19 200 kg	43 kPa (0.44 kgf/cm ²)

ZAXIS180LCN

Shoe type	Shoe width	Operating weight	Ground pressure
Triple grouser	500 mm	18 200 kg	49 kPa (0.50 kgf/cm ²)
Triple grouser	600 mm	18 400 kg	41 kPa (0.42 kgf/cm ²)
Triple grouser	700 mm	18 700 kg	36 kPa (0.37 kgf/cm ²)
Flat	600 mm	19 100 kg	43 kPa (0.44 kgf/cm ²)

Weights of the basic machines (including 3 800 kg counterweight and triple grouser shoes, excluding front-end attachment, fuel, hydraulic oil, engine oil and coolant etc.) are:

ZAXIS180LC 13 800 kg with 600 mm shoes
 ZAXIS180LCN 13 500 kg with 500 mm shoes

Service refill capacities

Fuel tank	280.0 l
Engine coolant	19.2 l
Engine oil	15.8 l
Swing mechanism	6.2 l
Travel final device (each side)	6.8 l
Hydraulic system	180.0 l
Hydraulic tank	100.0 l

Backhoe attachments

Boom and arms are of welded, box-section design. 5.50 m boom, 2-piece boom and 1.85 m, 2.25 m, 2.70 m and 3.20 m arms are available.

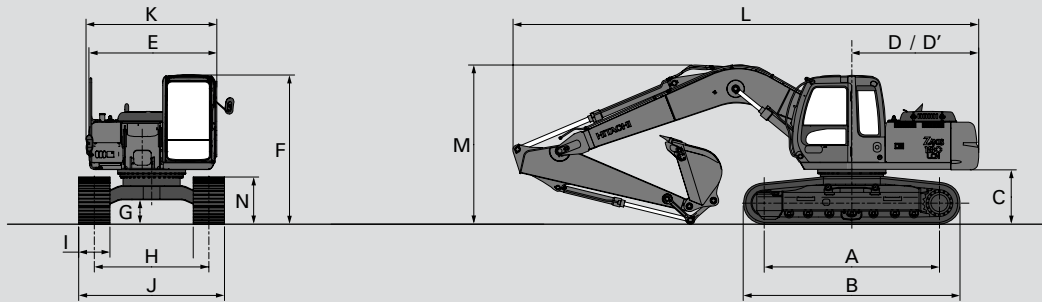
Bucket is of welded steel structure.

BUCKETS

Capacity PCSA heaped	Width Without side cutters	Weight
0.56 m ³	700 mm	498 kg
0.68 m ³	800 mm	548 kg
0.90 m ³	1 000 mm	608 kg
1.02 m ³	1 100 mm	658 kg
1.13 m ³	1 200 mm	688 kg
1.25 m ³	1 300 mm	718 kg

SPECIFICATIONS

Dimensions: Monoblock boom



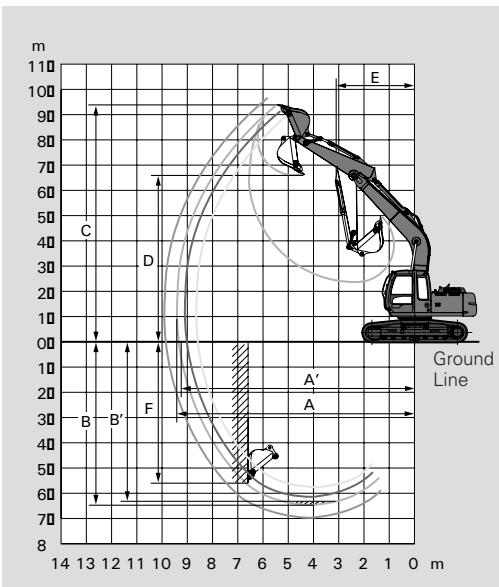
Unit: mm

	ZAXIS180LC	ZAXIS180LCN
A Sprocket centre to idler centre	3 370	3 370
B Undercarriage length	4 170	4 170
*C Counterweight clearance	1 000	1 000
D Rear-end swing radius	2 440	2 440
D' Rear-end length	2 440	2 440
E Overall width of upper structure	2 460	2 460
F Overall height of cabin	2 873	2 873
*G Min. ground clearance	450	450
H Track gauge	2 200	1 990
I Track shoe width	G 600	G 500
J Undercarriage width	2 800	2 490
K Overall width	2 800	2 500
L Overall length		
With 1.85 m arm	9 120	9 120
With 2.25 m arm	8 835	8 890
With 2.70 m arm	8 825	8 950
With 3.20 m arm	8 950	8 950
M Overall height of boom		
With 1.85 m arm	3 065	3 065
With 2.25 m arm	3 025	3 025
With 2.70 m arm	3 030	3 030
With 3.20 m arm	3 325	3 325
N Track height with triple grouser shoes	910	910

* Excluding track shoe lug. G: Triple grouser shoe

Working ranges

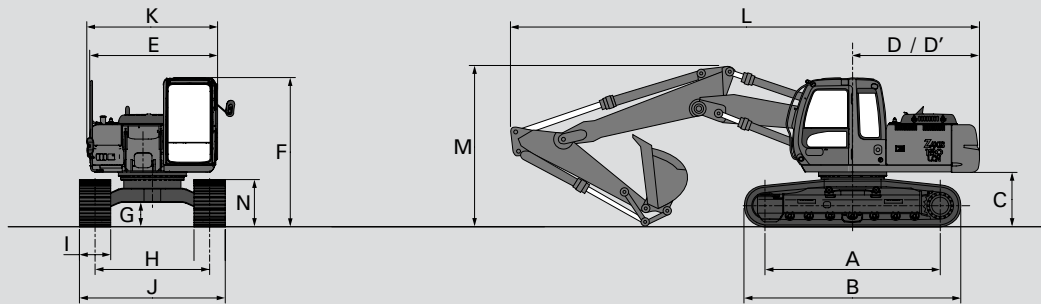
Unit: mm



	ZAXIS180LC / 180LCN			
	5.5 m Monoboom			
	1.85 m	2.25 m	2.70 m	3.20 m
Arm length				
A Max. digging reach	8 715	9 060	9 420	9 930
A' Max. digging reach (on ground)	8 545	8 900	9 260	9 780
B Max. digging depth	5 710	6 110	6 560	7 050
B' Max. digging depth (8' level)	5 430	5 850	6 310	6 855
C Max. cutting height	9 110	9 280	9 390	9 780
D Max. dumping height	6 280	6 460	6 580	6 950
E Min. swing radius	3 430	3 140	3 130	3 120
F Max. vertical wall	4 810	5 190	5 540	6 250
Bucket digging force ISO	116 kN (11 800 kgf)	116 kN (11 800 kgf)	116 kN (11 800 kgf)	116 kN (11 800 kgf)
Bucket digging force SAE : PCSA	102 kN (10 400 kgf)	102 kN (10 400 kgf)	102 kN (10 400 kgf)	102 kN (10 400 kgf)
Arm crowd force ISO	121 kN (12 300 kgf)	99 kN (10 100 kgf)	86 kN (8 780 kgf)	76 kN (7 760 kgf)
Arm crowd force SAE : PCSA	115 kN (11 800 kgf)	95 kN (9 680 kgf)	83 kN (8 460 kgf)	74 kN (7 540 kgf)

SPECIFICATIONS

Dimensions: 2-Piece boom



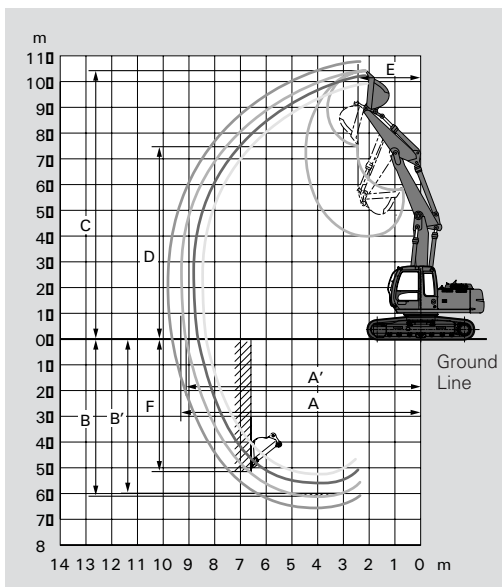
Unit: mm

	ZAXIS180LC	ZAXIS180LCN
A Sprocket centre to idler centre	3 370	3 370
B Undercarriage length	4 170	4 170
*C Counterweight clearance	1 000	1 000
D Rear-end swing radius	2 440	2 440
D' Rear-end length	2 440	2 440
E Overall width of upper structure	2 460	2 460
F Overall height of cabin	2 873	2 873
*G Min. ground clearance	450	450
H Track gauge	2 200	1 990
I Track shoe width	G 600	G 500
J Undercarriage width	2 800	2 490
K Overall width	2 800	2 500
L Overall length		
With 1.85 m arm	8 980	8 980
With 2.25 m arm	8 835	8 835
With 2.70 m arm	8 825	8 825
With 3.20 m arm	8 760	8 760
M Overall height of boom		
With 1.85 m arm	3 065	3 065
With 2.25 m arm	3 025	3 025
With 2.70 m arm	3 030	3 030
With 3.20 m arm	3 325	3 325
N Track height with triple grouser shoes	910	910

* Excluding track shoe lug. G: Triple grouser shoe

Working ranges

Unit: mm

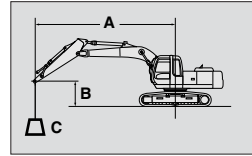


	ZAXIS180LC / 180LCN			
	2-Piece boom			
	1.85 m	2.25 m	2.70 m	3.20 m
Arm length				
A Max. digging reach	8 615	8 965	9 335	9 850
A' Max. digging reach (on ground)	8 440	8 800	9 175	9 695
B Max. digging depth	5 240	5 620	6 040	6 550
B' Max. digging depth (8' level)	5 115	5 505	5 925	6 450
C Max. cutting height	9 960	10 245	10 515	10 980
D Max. dumping height	7 045	7 330	7 600	8 070
E Min. swing radius	2 425	2 270	2 225	2 330
F Max. vertical wall	4 280	4 680	5 090	5 665
Bucket digging force ISO	116 kN (11 800 kgf)	116 kN (11 800 kgf)	116 kN (11 800 kgf)	116 kN (11 800 kgf)
Bucket digging force SAE : PCSA	102 kN (10 400 kgf)	102 kN (10 400 kgf)	102 kN (10 400 kgf)	102 kN (10 400 kgf)
Arm crowd force ISO	121 kN (12 300 kgf)	99 kN (10 100 kgf)	86 kN (8 780 kgf)	76 kN (7 760 kgf)
Arm crowd force SAE : PCSA	115 kN (11 800 kgf)	95 kN (9 680 kgf)	83 kN (8 460 kgf)	74 kN (7 540 kgf)

LIFTING CAPACITIES

Metric measure

- Notes:
1. Ratings are based on ISO 10576.
 2. Lifting capacity of the ZAXIS series does not exceed 75% of tipping load with the machine on firm, level ground or 87% full hydraulic capacity.
 3. The load point is the center-line of the bucket pivot mounting pin on the arm.
 4. * Indicates load limited by hydraulic capacity.
 5. 0 m = Ground.



ZAXIS180LC MONOBLOCK BOOM



Rating over-side or 360 degrees



Rating over-front

Unit: kg

Conditions	Load point height	Load radius										At max. reach				
		3 m		4 m		5 m		6 m		7 m		8 m		meter		
		⤴	⤵	⤴	⤵	⤴	⤵	⤴	⤵	⤴	⤵	⤴	⤵			
Arm 1.85 m Shoe 600 mm	4 m			*6 570	*6 910	*4 720	5 170	*3 600	3 930					4 480	2 900	6.88
	2 m					4 330	4 770	3 380	3 710	4 250	2 720			4 030	2 590	7.25
	0 m					4 130	4 560	3 240	3 560	4 170	2 650			4 130	2 630	7.05
	-1 m			*5 680	6 320	4 120	4 550	3 230	3 550					4 420	2 790	6.72
	-3 m	*10 370	9 320	*5 840	6 480	*4 240	4 670							*6 030	3 770	5.47
Arm 2.25 m Shoe 600 mm	6 m					*4 390	*4 380	*4 460	3 760					*4 480	3 890	6.25
	4 m			*6 310	*6 310	*5 390	4 780	*4 890	3 620	4 390	2 840			*4 410	2 680	7.24
	2 m			*8 990	5 920	*6 890	4 360	5 350	3 380	4 250	2 710			3 760	2 400	7.59
	0 m			9 790	5 630	6 790	4 110	5 170	3 220	4 140	2 610			3 830	2 420	7.40
	-1 m	*6 930	*6 930	9 770	5 610	6 750	4 080	5 130	3 180	4 130	2 600			4 060	2 560	7.09
Arm 2.70 m Shoe 600 mm	6 m					*3 900	*3 900	*4 000	*3 820					*3 410	*3 160	6.68
	4 m	*7 020	*7 020	*5 630	*5 630	*4 940	*4 950	*4 540	3 660	*4 340	2 860			*3 390	2 480	7.62
	2 m			*6 030	6 700	*6 520	4 410	5 380	3 400	4 250	2 720			3 500	2 230	7.95
	0 m	*4 890	*4 890	5 620	6 270	6 790	4 110	5 150	3 200	4 120	2 590			3 550	2 240	7.77
	-1 m	*7 380	*7 380	5 570	6 220	6 720	4 050	5 100	3 150	4 090	2 560			3 730	2 350	7.47
Arm 3.20 m Shoe 600 mm	6 m							*3 530	*3 520	*3 430	2 980			*2 800	*2 760	7.28
	4 m					*4 410	*4 400	*4 140	3 710	*3 990	2 890	*3 240	2 300	*2 760	2 220	8.1
	2 m			*7 680	6 170	*6 070	4 470	*5 170	3 430	4 270	2 720	3 470	2 210	*2 930	2 010	8.4
	0 m	*5 230	*5 230	*9 550	5 630	6 800	4 110	5 150	3 190	4 100	2 570	3 370	2 120	3 200	2 010	8.2
	-1 m	*6 900	*6 900	9 690	5 630	6 690	4 020	5 070	3 120	4 050	2 520	3 350	2 100	3 350	2 100	8.01
Arm 3.20 m Shoe 500 mm	6 m							*3 530	3 490	*3 430	2 660			*2 800	2 470	7.28
	4 m					*4 410	4 410	*4 140	3 310	*3 990	2 580	*3 240	2 040	*2 760	1 970	8.15
	2 m			*7 680	5 430	*6 070	3 960	*5 170	3 040	4 190	2 420	3 410	1 960	*2 930	1 780	8.46
	0 m	*5 230	*5 230	*9 550	4 910	6 680	3 610	5 060	2 810	4 030	2 270	3 310	1 870	3 150	1 770	8.29
	-1 m	*6 900	*6 900	9 530	4 820	6 580	3 530	4 990	2 750	3 980	2 220	3 290	1 850	3 280	1 850	8.01
Arm 3.20 m Shoe 500 mm	6 m							*3 530	3 490	*3 430	2 660			*2 800	2 470	7.28
	4 m					*4 410	4 410	*4 140	3 310	*3 990	2 580	*3 240	2 040	*2 760	1 970	8.15
	2 m			*7 680	5 430	*6 070	3 960	*5 170	3 040	4 190	2 420	3 410	1 960	*2 930	1 780	8.46
	0 m	*5 230	*5 230	*9 550	4 910	6 680	3 610	5 060	2 810	4 030	2 270	3 310	1 870	3 150	1 770	8.29
	-1 m	*6 900	*6 900	9 530	4 820	6 580	3 530	4 990	2 750	3 980	2 220	3 290	1 850	3 280	1 850	8.01
Arm 3.20 m Shoe 500 mm	6 m							*3 530	3 490	*3 430	2 660			*2 800	2 470	7.28
	4 m					*4 410	4 410	*4 140	3 310	*3 990	2 580	*3 240	2 040	*2 760	1 970	8.15
	2 m			*7 680	5 430	*6 070	3 960	*5 170	3 040	4 190	2 420	3 410	1 960	*2 930	1 780	8.46
	0 m	*5 230	*5 230	*9 550	4 910	6 680	3 610	5 060	2 810	4 030	2 270	3 310	1 870	3 150	1 770	8.29
	-1 m	*6 900	*6 900	9 530	4 820	6 580	3 530	4 990	2 750	3 980	2 220	3 290	1 850	3 280	1 850	8.01
Arm 3.20 m Shoe 500 mm	6 m							*3 530	3 490	*3 430	2 660			*2 800	2 470	7.28
	4 m					*4 410	4 410	*4 140	3 310	*3 990	2 580	*3 240	2 040	*2 760	1 970	8.15
	2 m			*7 680	5 430	*6 070	3 960	*5 170	3 040	4 190	2 420	3 410	1 960	*2 930	1 780	8.46
	0 m	*5 230	*5 230	*9 550	4 910	6 680	3 610	5 060	2 810	4 030	2 270	3 310	1 870	3 150	1 770	8.29
	-1 m	*6 900	*6 900	9 530	4 820	6 580	3 530	4 990	2 750	3 980	2 220	3 290	1 850	3 280	1 850	8.01
Arm 3.20 m Shoe 500 mm	6 m							*3 530	3 490	*3 430	2 660			*2 800	2 470	7.28
	4 m					*4 410	4 410	*4 140	3 310	*3 990	2 580	*3 240	2 040	*2 760	1 970	8.15
	2 m			*7 680	5 430	*6 070	3 960	*5 170	3 040	4 190	2 420	3 410	1 960	*2 930	1 780	8.46
	0 m	*5 230	*5 230	*9 550	4 910	6 680	3 610	5 060	2 810	4 030	2 270	3 310	1 870	3 150	1 770	8.29
	-1 m	*6 900	*6 900	9 530	4 820	6 580	3 530	4 990	2 750	3 980	2 220	3 290	1 850	3 280	1 850	8.01
Arm 3.20 m Shoe 500 mm	6 m							*3 530	3 490	*3 430	2 660			*2 800	2 470	7.28
	4 m					*4 410	4 410	*4 140	3 310	*3 990	2 580	*3 240	2 040	*2 760	1 970	8.15
	2 m			*7 680	5 430	*6 070	3 960	*5 170	3 040	4 190	2 420	3 410	1 960	*2 930	1 780	8.46
	0 m	*5 230	*5 230	*9 550	4 910	6 680	3 610	5 060	2 810	4 030	2 270	3 310	1 870	3 150	1 770	8.29
	-1 m	*6 900	*6 900	9 530	4 820	6 580	3 530	4 990	2 750	3 980	2 220	3 290	1 850	3 280	1 850	8.01
Arm 3.20 m Shoe 500 mm	6 m							*3 530	3 490	*3 430	2 660			*2 800	2 470	7.28
	4 m					*4 410	4 410	*4 140	3 310	*3 990	2 580	*3 240	2 040	*2 760	1 970	8.15
	2 m			*7 680	5 430	*6 070	3 960	*5 170	3 040	4 190	2 420	3 410	1 960	*2 930	1 780	8.46
	0 m	*5 230	*5 230	*9 550	4 910	6 680	3 610	5 060	2 810	4 030	2 270	3 310	1 870	3 150	1 770	8.29
	-1 m	*6 900	*6 900	9 530	4 820	6 580	3 530	4 990	2 750	3 980	2 220	3 290	1 850	3 280	1 850	8.01
Arm 3.20 m Shoe 500 mm	6 m							*3 530	3 490	*3 430	2 660			*2 800	2 470	7.28
	4 m					*4 410	4 410	*4 140	3 310	*3 990	2 580	*3 240	2 040	*2 760	1 970	8.15
	2 m			*7 680	5 430	*6 070	3 960	*5 170	3 040	4 190	2 420	3 410	1 960	*2 930	1 780	8.46
	0 m	*5 230	*5 230	*9 550	4 910	6 680	3 610	5 060	2 810	4 030	2 270	3 310	1 870	3 150	1 770	8.29
	-1 m	*6 900	*6 900	9 530	4 820	6 580	3 530	4 990	2 750	3 980	2 220	3 290	1 850	3 280	1 850	8.01
Arm 3.20 m Shoe 500 mm	6 m							*3 530	3 490	*3 430	2 660			*2 800	2 470	7.28
	4 m					*4 410	4 410	*4 140	3 310	*3 990	2 580	*3 240	2 040	*2 760	1 970	8.15
	2 m			*7 680	5 430	*6 070	3 960	*5 170	3 040	4 190	2 420	3 410	1 960	*2 930	1 780	8.46
	0 m	*5 230	*5 230	*9 550	4 910	6 680	3 610	5 060	2 810	4 030	2 270	3 310	1 870	3 150	1 770	8.29
	-1 m	*6 900	*6 900	9 530	4 820	6 580	3 530	4 990	2 750	3 980	2 220	3 290	1 850	3 280	1 850	8.01
Arm 3.20 m Shoe 500 mm	6 m							*3 530	3 490	*3 430	2 660			*2 800	2 470	7.28
	4 m					*4 410	4 410	*4 140	3 310	*3 990	2 580	*3 240	2 040	*2 760	1 970	8.15
	2 m			*7 680	5 430	*6 070	3 960	*5 170	3 040	4 190	2 420	3 410	1 960	*2 930	1 780	8.46
	0 m	*5 230	*5 230	*9 550	4 910	6 680	3 610	5 060	2 810	4 030	2 270	3 310	1 870	3 150	1 770	8.29
	-1 m	*6 900	*6 900	9 530	4 820	6 580	3 530	4 990	2 750	3 980	2 220	3 290	1 850	3 280	1 850	8.01

ZAXIS180LCN MONOBLOCK BOOM

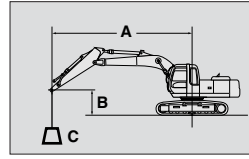
Unit: kg

Conditions	Load point height	Load radius										At max. reach				
		3 m		4 m		5 m		6 m		7 m		8 m		meter		
		⤴	⤵	⤴	⤵	⤴	⤵	⤴	⤵	⤴	⤵	⤴	⤵			
Arm 1.85 m Shoe 500 mm	4 m			*6 920	5 820	*5 770	4 210	*5 200	3 220					4 410	2 590	6.88
	2 m					6 920	3 830	5 260	3 000	4 180	2 420			3 970	2 300	7.25
	0 m					6 690	3 640	5 100	2 870	4 100	2 350			4 060	2 330	7.05
	-1 m			9 670	4 960	6 670	3 630	5 080	2 850					4 340	2 480	6.72
	-3 m															

LIFTING CAPACITIES

Metric measure

- Notes:
1. Ratings are based on ISO 10576.
 2. Lifting capacity of the ZAXIS series does not exceed 75% of tipping load with the machine on firm, level ground or 87% full hydraulic capacity.
 3. The load point is the center-line of the bucket pivot mounting pin on the arm.
 4. * Indicates load limited by hydraulic capacity.
 5. 0 m = Ground.



- A: Load radius
B: Load point height
C: Lifting capacity

ZAXIS180LC 2-PIECE BOOM



Rating over-side or 360 degrees



Rating over-front

Unit: kg

Conditions	Load point height	Load radius												At max. reach		
		3 m		4 m		5 m		6 m		7 m		8 m		meter		
		☺	☹	☺	☹	☺	☹	☺	☹	☺	☹	☺	☹			
Arm 1.85 m Shoe 600 mm	6 m	*7 870	*7 870	*6 980	*6 980	*6 980	5 620	5 150						*5 390	4 000	5.70
	4 m	*9 130	*9 130	*8 560	7 570	*7 000	*5 530	5 150	4 050	3 710				4 590	2 930	6.78
	2 m	*11 850	10 400	*9 540	7 400	6 780	5 320	4 890	3 890	3 550	2 690			4 110	2 590	7.15
	0 m	*13 570	9 790	*9 940	6 970	6 920	4 900	4 450	3 640	3 310				4 210	2 630	6.94
	-1 m	*13 690	9 530	*10 050	6 750	6 080	4 720	4 270	3 560	3 230				4 520	2 810	6.61
	-3 m	*11 620	9 530	*8 040	6 510	*5 840	4 660	4 220						*4 320	*4 000	5.20
Arm 2.25 m Shoe 600 mm	8 m	*6 720	*6 740	*5 420	*5 240									*5 380	*5 400	4.01
	6 m	*5 930	*5 940	*6 400	*6 410	*5 750	5 240	*4 900	3 750					*4 390	3 570	6.15
	4 m	*10 300	*10 300	*8 040	7 010	*6 430	5 130	*5 460	3 800	4 400	2 810			4 230	2 690	7.15
	2 m	*11 950	11 370	*9 740	6 810	*7 250	*5 010	5 610	3 620	4 310	2 730			3 810	2 390	7.51
	0 m	*13 450	9 930	*9 870	6 360	7 250	4 530	5 360	3 340	4 160	2 590			3 880	2 420	7.31
	-1 m	*13 560	9 580	*9 940	6 120	7 090	4 310	5 230	3 230					4 130	2 560	6.99
Arm 2.70 m Shoe 600 mm	8 m			*4 950	*4 950									*3 910	*3 910	4.67
	6 m			*5 200	*5 200	*5 180	*5 180	*4 590	3 870					*3 330	*3 220	6.59
	4 m	*9 680	*9 680	*7 400	*7 050	*6 040	*5 130	*5 170	3 900	4 460	2 900			*3 270	2 490	7.54
	2 m	*11 920	10 360	*9 440	6 810	7 240	4 960	5 590	3 720	4 360	2 790			*3 480	2 220	7.88
	0 m	*13 240	10 140	*9 810	6 470	7 200	4 630	5 420	3 400	4 180	2 610			3 590	2 230	7.69
	-1 m	*13 440	9 680	*9 850	6 170	7 160	4 370	5 260	3 250	4 110	2 540			3 780	2 340	7.39
Arm 3.20 m Shoe 600 mm	8 m			*4 350	*4 350	*3 920	*3 920							*3 140	*3 140	5.50
	6 m			*4 010	*4 010	*4 260	*4 260	*4 170	*3 960	*3 240	2 960			*2 730	*2 730	7.20
	4 m	*5 450	*5 450	*5 590	*5 590	*5 440	*5 150	*4 870	3 970	*4 280	3 000	*2 920	2 270	*2 660	2 220	8.07
	2 m	*11 810	10 360	*9 010	6 800	*6 990	5 000	5 560	3 820	4 430	2 870	3 480	2 200	*2 790	2 000	8.39
	0 m	*12 870	10 290	*9 750	6 610	7 130	4 710	5 450	3 500	4 230	2 660	3 370	2 090	*3 160	2 000	8.21
	-1 m	*13 310	9 830	*9 760	6 260	7 160	4 490	5 340	3 320	4 130	2 560			3 380	2 080	7.93
-3 m	*13 650	9 330	*9 950	5 810	6 850	4 100	5 110	3 110					*3 820	2 550	6.91	

ZAXIS180LCN 2-PIECE BOOM

Unit: kg

Conditions	Load point height	Load radius												At max. reach		
		3 m		4 m		5 m		6 m		7 m		8 m		meter		
		☺	☹	☺	☹	☺	☹	☺	☹	☺	☹	☺	☹			
Arm 1.85 m Shoe 500 mm	6 m	*7 870	*7 870	*6 980	6 580	*6 130	4 610							*5 390	3 570	5.70
	4 m	*9 130	*9 130	*8 560	6 360	*6 790	4 630	5 640	3 310					4 520	2 600	6.78
	2 m	*11 850	9 320	*9 540	6 200	7 190	4 360	5 500	3 150					4 040	2 280	7.15
	0 m	*13 570	8 440	*9 930	5 520	7 120	3 930	5 230	2 920					4 140	2 310	6.94
	-1 m	*13 690	8 190	*10 050	5 320	6 920	3 760	5 140	2 840					4 440	2 470	6.61
	-3 m	*11 620	8 030	*8 040	5 090	*5 060	3 700							*4 320	3 520	5.20
Arm 2.25 m Shoe 500 mm	8 m	*6 720	*6 720	*5 420	*5 420									*5 380	*5 380	4.01
	6 m	*5 930	*5 930	*6 400	*6 400	*5 750	4 740	*4 900	3 350					*4 390	3 180	6.15
	4 m	*10 300	9 650	*8 040	*6 360	*6 430	4 680	*5 460	3 400					4 160	2 380	7.15
	2 m	*11 950	*9 330	*9 740	6 130	7 160	4 470	5 530	3 220					3 740	2 110	7.51
	0 m	*13 450	8 570	*9 850	5 590	7 140	4 000	5 270	2 950					3 820	2 120	7.31
	-1 m	*13 560	8 240	*9 940	5 360	6 970	3 790	5 140	2 840					4 060	2 250	6.99
Arm 2.70 m Shoe 500 mm	8 m			*4 950	*4 950									*3 910	*3 910	4.67
	6 m			*5 200	*5 200	*5 180	*4 790	*4 590	*3 480					*3 330	2 970	6.59
	4 m	*9 680	*9 680	*7 400	6 390	*6 040	4 680	*5 170	3 500					*3 270	2 200	7.54
	2 m	*11 920	9 310	*9 440	6 180	7 150	4 580	5 520	3 310					3 480	1 950	7.88
	0 m	*13 240	8 760	*9 790	5 690	7 130	4 100	5 340	3 000					3 520	1 950	7.69
	-1 m	*13 440	8 330	*9 840	5 410	7 050	3 850	5 180	2 860					3 710	2 050	7.39
Arm 3.20 m Shoe 500 mm	8 m			*4 350	*4 350	*3 920	*3 920							*3 140	*3 140	5.50
	6 m			*4 010	*4 010	*4 260	*4 260	*4 170	3 600					*2 730	2 480	7.20
	4 m	*5 450	*5 450	*5 590	*5 590	*5 440	4 680	*4 870	3 610	*2 920	2 000			*2 660	1 960	8.07
	2 m	*11 810	9 310	*9 010	6 170	*6 990	4 530	5 490	3 440	3 430	1 940			*2 790	1 750	8.39
	0 m	*12 870	9 030	*9 730	5 830	7 060	4 180	5 380	3 100	3 310	1 830			*3 160	1 740	8.21
	-1 m	*13 310	8 470	*9 750	5 490	*7 090	3 960	5 250	2 920					3 320	1 820	7.93
-3 m	*13 650	8 000	*9 950	5 060	6 740	3 580	5 020	2 720					*3 820	2 230	6.91	

Standard Equipment

Standard equipment may vary by country, so please consult your Hitachi dealer for details.

ENGINE

- H/P mode control
- E mode control
- 50 A alternator
- Dry-type air filter with evacuator valve (with safety element)
- Cartridge-type engine oil filter
- Cartridge-type fuel filter
- Air cleaner double filters
- Radiator and oil cooler with dust protective net
- Radiator reserve tank
- Fan guard
- Isolation-mounted engine
- Auto-idle system
- Auto acceleration system

HYDRAULIC SYSTEM

- Work mode selector
- Engine speed sensing system
- E-P control system
- Quick warm-up system for pilot circuit
- Shockless valve in pilot circuit
- Boom-arm anti-drift valve
- Control valve with main relief valve
- Extra port for control valve
- Suction filter
- Full-flow filter
- Pilot filter

CABIN

- CRES (Center pillar Reinforced Structure) cabin
- OPG top guard Level I (ISO) compliant cabin
- All-weather sound-suppressed steel cabin
- Reinforced, tinted (bronze color) glass windows
- 4 fluid-filled elastic mounts
- Upper, lower and left-side windows can be opened
- Intermittent windshield retractable wipers
- Front window washer
- Adjustable reclining seat with adjustable armrests
- Footrest
- Electric double horn
- AM - FM radio with digital clock
- Auto-idle / acceleration selector
- Seat belt
- Drink holder
- Cigar lighter
- Ashtray
- Storage box
- Glove compartment
- Fire extinguisher bracket
- Floor mat
- Pilot control shut-off lever
- Engine stop knob
- Auto control air conditioner
- Transparency roof with roll curtain
- Suspension seat

MONITOR SYSTEM

- Meters: Hourmeter and trip-meter, engine coolant temperature gauge and fuel gauge
- Warning lamps: Alternator charge, engine oil pressure, engine overheat, air filter restriction and minimum fuel level
- Pilot lamps: Engine preheat, engine oil level, engine coolant level, hydraulic oil level, work light, auto-idle, auto-acceleration, digging mode and attachment mode
- Alarm buzzers: Engine oil pressure and engine overheat

LIGHTS

- 2 working lights

UPPER STRUCTURE

- Undercover
- 3 000 kg counterweight
- Fuel level float
- Hydraulic oil level gauge
- Tool box
- Utility space
- Rearview mirror (right & left side)
- Swing parking brake

UNDERCARRIAGE

- Travel parking brake
- Travel motor covers
- Track guards and hydraulic track adjuster
- Bolt-on sprocket
- Upper rollers and lower rollers
- Reinforced track links with pin seals

FRONT ATTACHMENTS

- HN bushing
- WC thermal spraying
- Reinforced resin thrust plate
- Flanged pin
- Monolithically cast bucket link A
- Centralized lubrication system
- Dirt seal on all bucket pins

MISCELLANEOUS

- Standard tool kit
- Lockable machine covers
- Lockable fuel filling cap
- Skid-resistant tapes, plates and handrails
- Travel direction mark on track frame
- Onboard ICX

Optional Equipment

Optional equipment may vary by country, so please consult your Hitachi dealer for details.

CABIN

- Front glass lower guard
- Front glass upper guard
- Overhead guard
- OPG top and front guard Level II (ISO) compliant cabin
- Vandal cover
- Suspension seat with heater
- Airsuspension seat with heater
- Rain guard
- Sun visor
- Additional fuse box
- Immobilizer key
- 12 V power supply

LIGHTS

- Additional cabin roof front lights
- Additional cabin roof rear lights
- Rotating lamp
- Additional boom light with cover
- Reinforced arm

UNDERCARRIAGE

- Track under cover
- Reinforced track guard (2 units each side)
- Full track guard

ATTACHMENT

- Hammer and crusher piping
- Parts for hammer
- Parts for hammer and crusher
- Parts for 2 speed selector
- Assist piping
- Additional pump (30 l/min, 40 l/min)
- Clamshell piping
- Quick coupler piping

OTHERS

- Hose rupture valves
- Overload warning device
- Electric fuel refilling pump
- Fuel double filter
- Pre-cleaner
- High-performance full-flow filter (with restriction indicator)
- Bio oil
- Auto-lubrication pump

Hitachi Construction Machinery (Europe) NV

Souvereinstraat 16, 4903 RH Oosterhout, P.O. Box 404, 4900 AK Oosterhout, The Netherlands
T +31-(0)162 48 44 00, F +31-(0)162 45 74 53, www.hcme.com

Siciliëweg 5, Haven 5112, 1045 AT Amsterdam, P.O. Box 59239, 1040 KE Amsterdam, The Netherlands
T +31-(0)20 44 76 700, F +31-(0)20 33 44 045, www.hcme.com



**Breaking
new
ground**

HITACHI